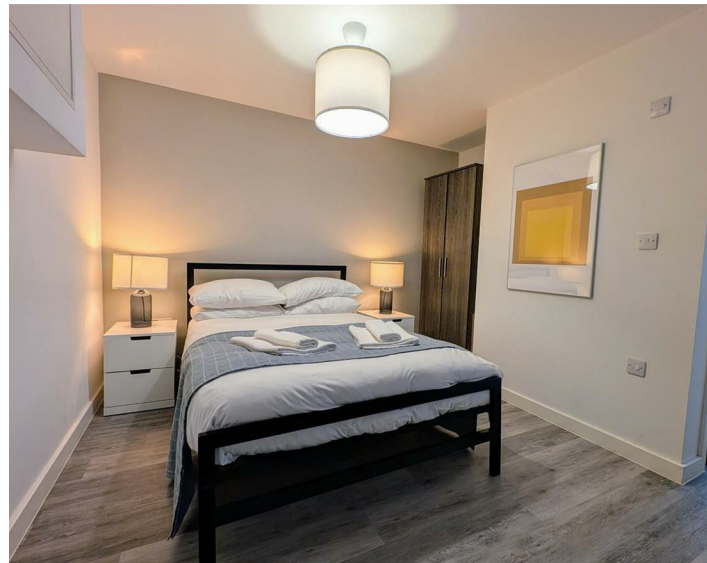




Apt 73 4 Leigh Street, Liverpool, L1 1NT
£695 Per Month

www.
cityresidential
.co.uk



About the Property

Move In Ready!!

A well-presented studio apartment now available to rent in the heart of Liverpool City Centre, just moments from shops, restaurants, and transport links.

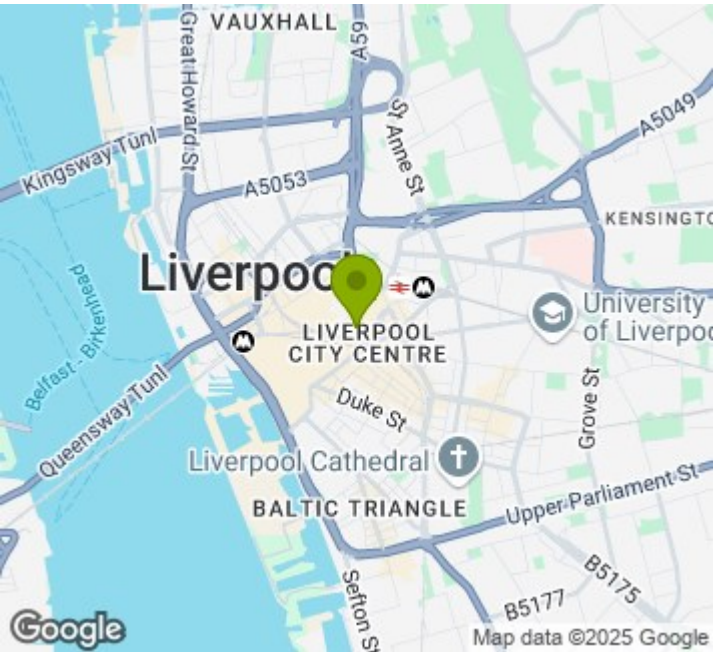
Key Features:

- Prime location on Leigh Street, close to Liverpool Central & Lime Street stations
- Double glazing for comfort and noise reduction
- Secure intercom entry system
- Modern kitchen with integrated appliances
- Lift access to all floors

Ideal for professionals or students, this bright and convenient studio offers easy access to everything the city has to offer.

Contact us today to arrange a viewing!

- Move In Ready!!
- Fully Furnished
- Amazing Location
- Must Be Viewed!!
- EPC Rating - B
- Council Tax Band - A
- Deposit Payable £801



Energy Efficiency Rating

	Current	Potential
Very energy efficient - lower running costs		
(92 plus) A		
(81-91) B	84	86
(69-80) C		
(55-68) D		
(39-54) E		
(21-38) F		
(1-20) G		
Not energy efficient - higher running costs		
England & Wales	EU Directive 2002/91/EC	



City Residential
81/87 Victoria Street, The Old Haymarket, Liverpool L1 6DG
T: 0151 231 6100 F: 0151 231 6105
E: sales@cityresidential.co.uk



WWW.
cityresidential
.co.uk